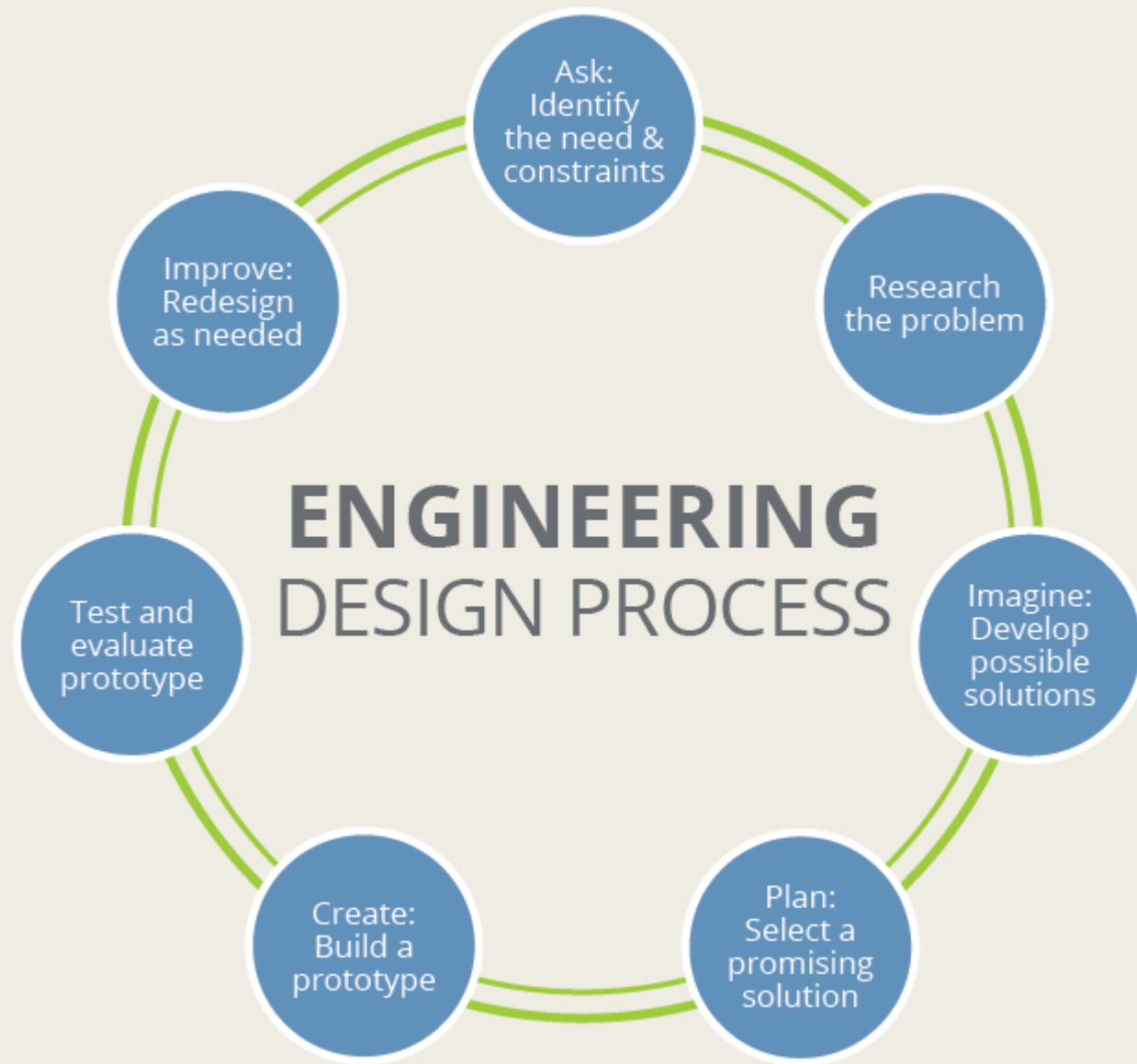


A large, thick black L-shaped graphic is positioned on the left side of the page, extending from the top to the bottom. A second, smaller L-shaped graphic is positioned on the right side, extending from the top to the bottom. The main title is centered between these two shapes.

TEKNIK DESAIN

Matrikulasi 2017



Build a Prototype

Membuat sebuah prototipe

- **Perancangan prototipe**
- Pemilihan bahan dan material
- Proses manufaktur

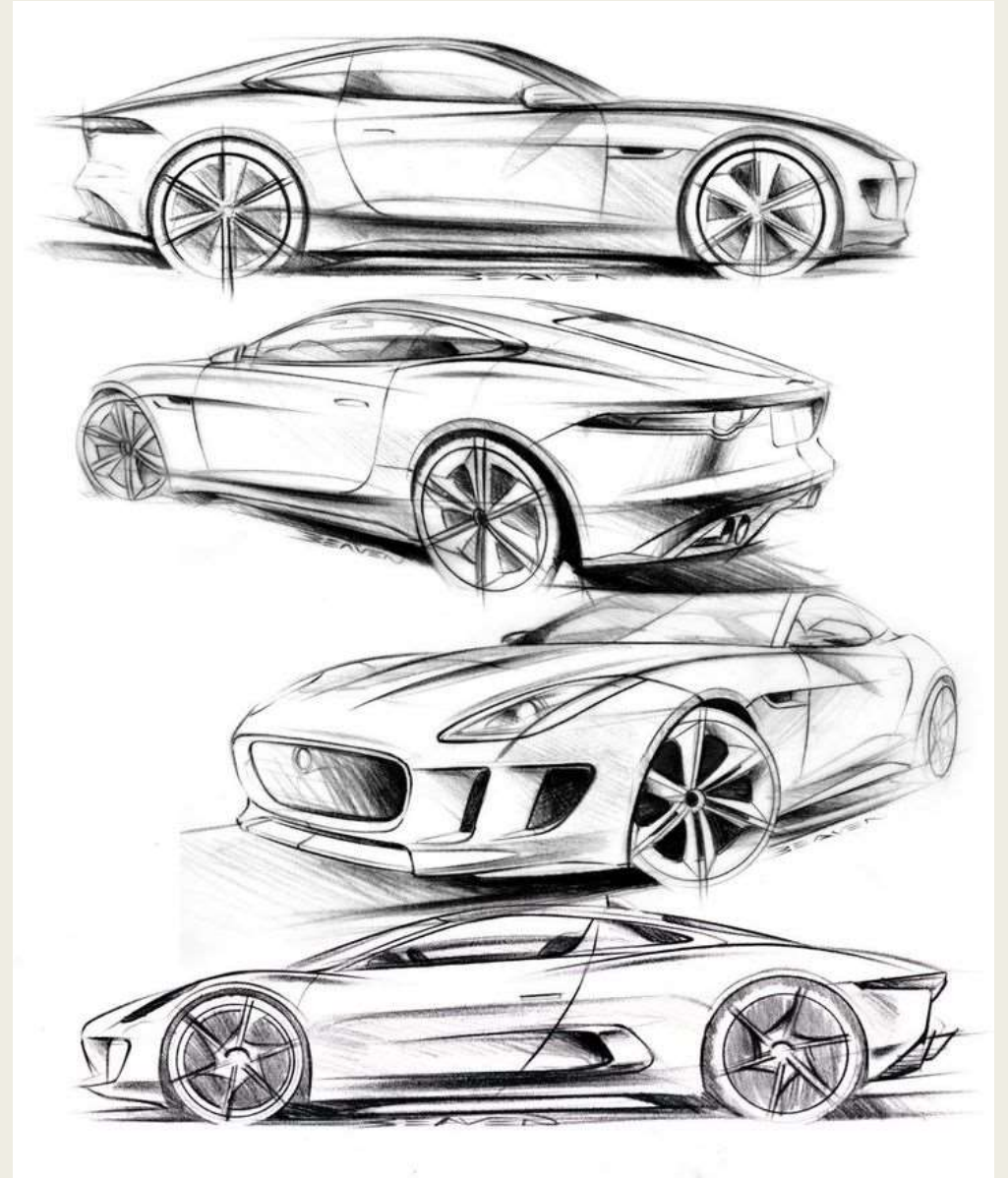
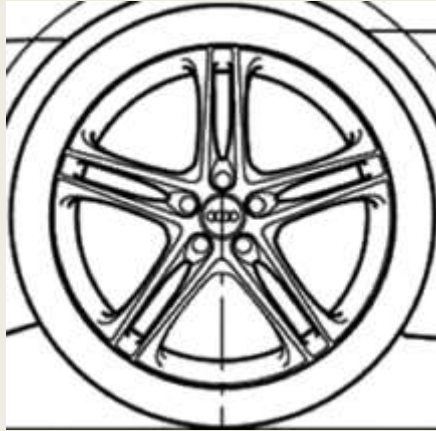
Prototipe

- Perancangan prototipe

Prototipe adalah bentuk awal (contoh) atau standar ukuran dari sebuah [entitas](#). Dalam bidang [desain](#), sebuah prototipe dibuat sebelum dikembangkan atau justru dibuat khusus untuk pengembangan sebelum dibuat dalam skala sebenarnya atau sebelum diproduksi secara massal.



Gambar sketsa



Car sketch

Car design sketch

Car wheels

Sketches

Automotive design

Car rims

Wheel rim

Car

Sketch design

Auto wheels

Peugeot



Car Design Sketch Car Sketch Car Design >

2005 Ford Iosis.
See More



Alloy Wheel Auto Wheels Transport >

Hyundai i flow Concept Wheel Design Sketch - Car Body Design
See More



Car Sketch Wheels News Industry >

PS_00048
See More



Car Wheels Wheel Rim Behance V >

Concept Wheel - GM by Vignio



Wheel Rim Car Rims Auto Wheels >

Citroen Numero 9 Concept Wheel Design Sketch
See More



Car Wheels Wheel Rim Behance V >



Motors Wheels Homes Industrial C >

In wheel motor concept
See More



Sketch 4 Sketch Design Wheel Rim >

hot sketches « All The Sketches
See More

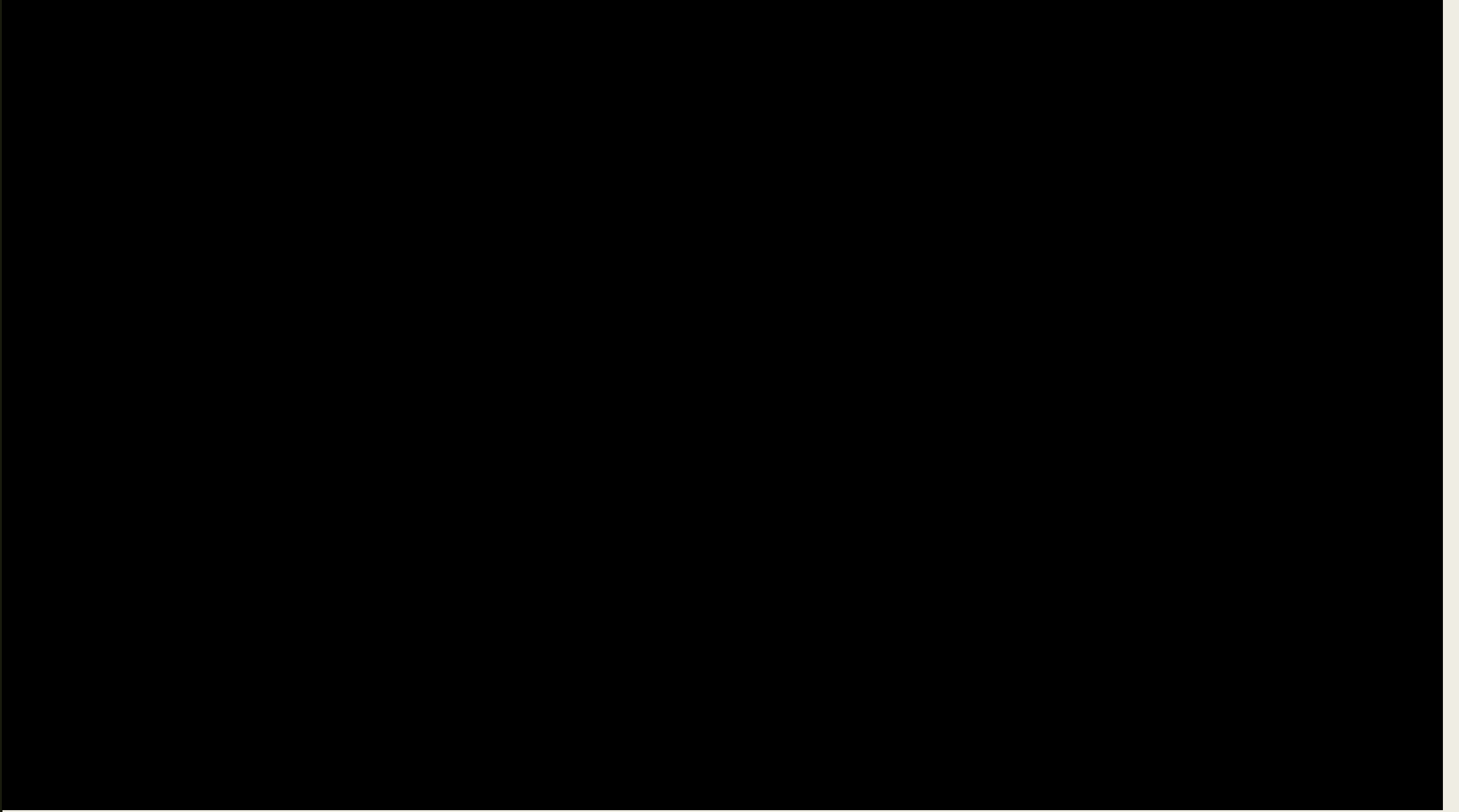


CAD

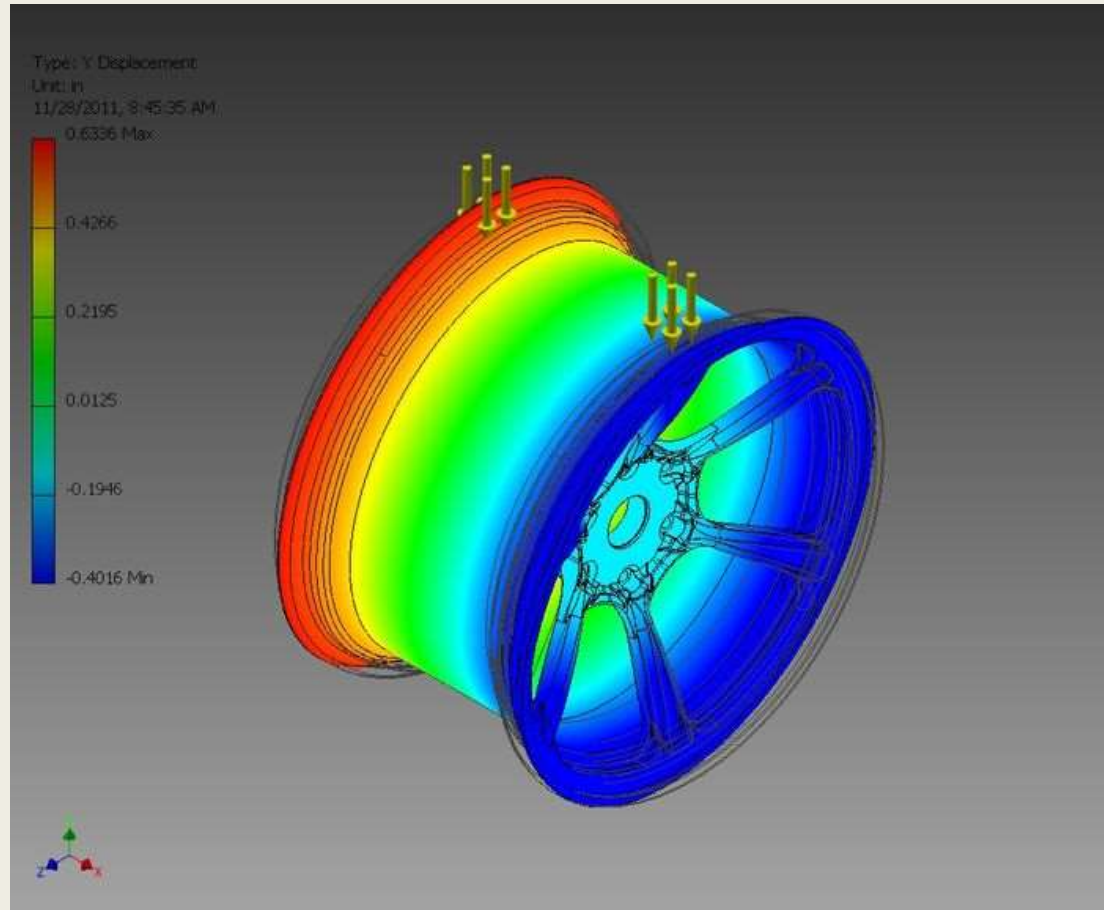
- Computer Aided Design

CAD, atau desain dan rancangan dibantu komputer (CAD), adalah penggunaan teknologi komputer untuk proses desain dan dokumentasi desain. *Software* CAD menggantikan penyusunan proses desain secara manual.





Finite Element Analysis



Analisis elemen hingga (**FEA**) adalah metode terkomputerisasi untuk memprediksi bagaimana suatu produk bereaksi terhadap kekuatan dunia nyata, getaran, panas, aliran fluida, dan efek fisik lainnya. Analisis elemen hingga menunjukkan apakah suatu produk akan rusak, aus, atau bekerja seperti yang dirancangnya

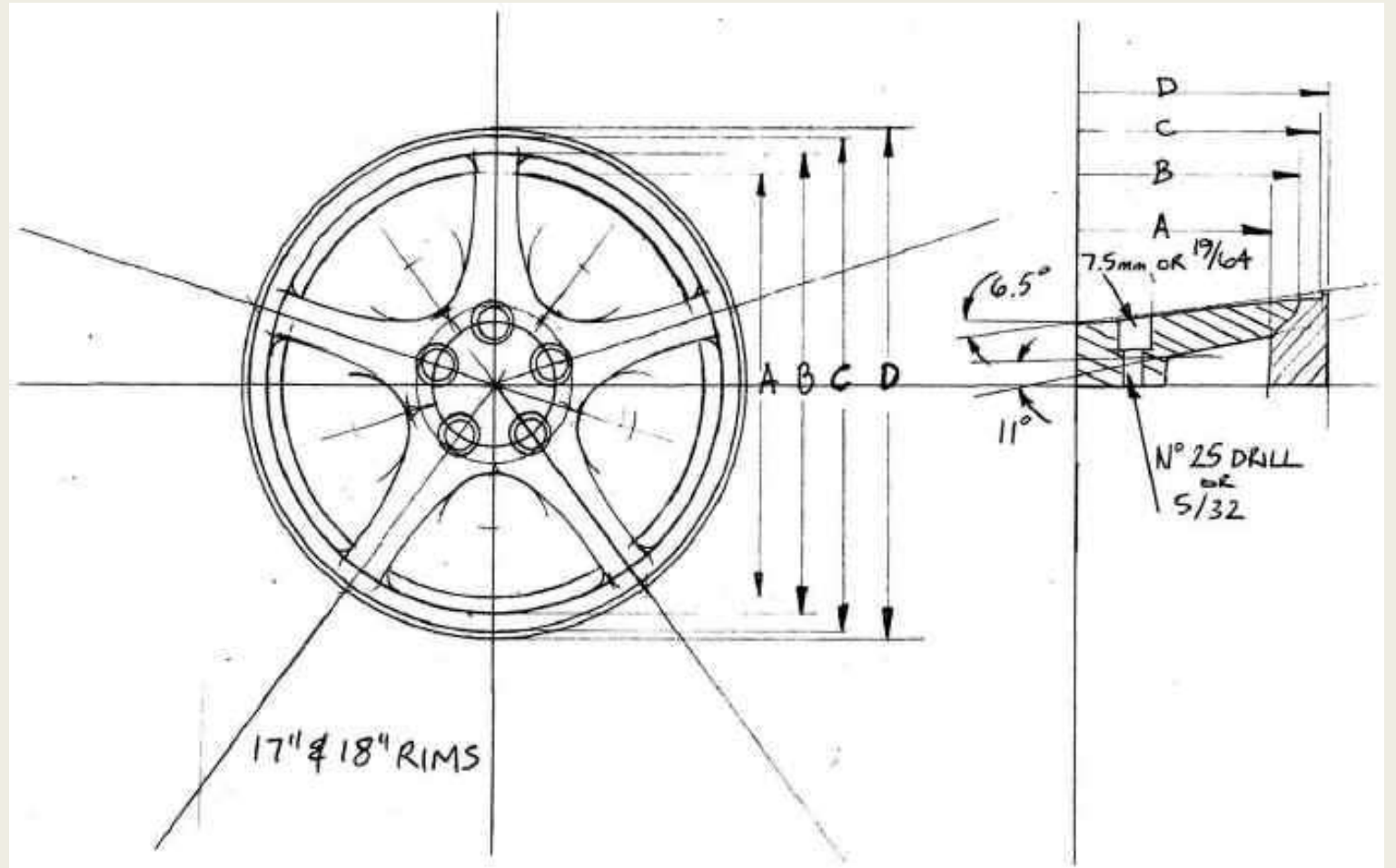
cadline

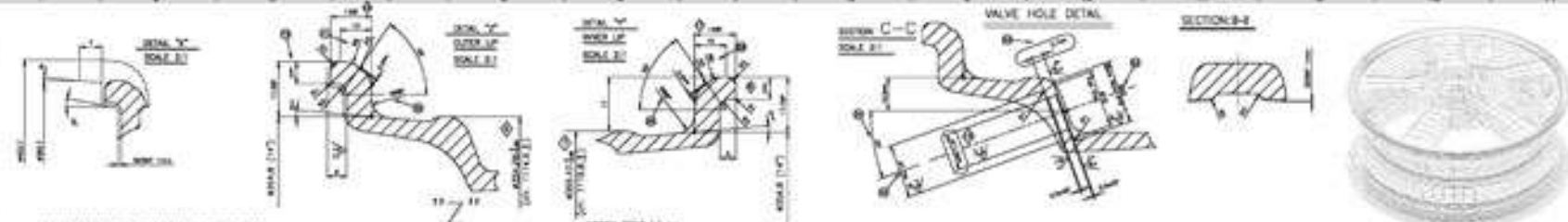


cadline
community

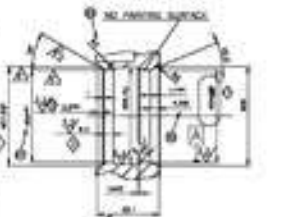
Dokumentasi Gambar

Gambar teknik, sejenis gambar teknis, digunakan untuk mendefinisikan secara lengkap dan jelas persyaratan untuk barang-barang yang direkayasa. Gambar teknik (aktivitas) menghasilkan gambar teknik (dokumen).

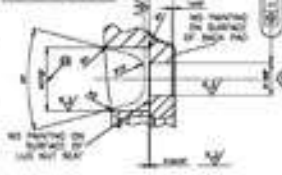




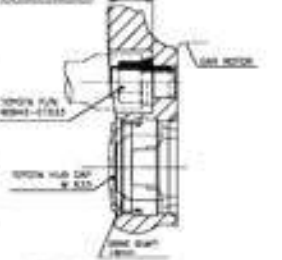
HUB CAP AND CENTER BORE DETAIL



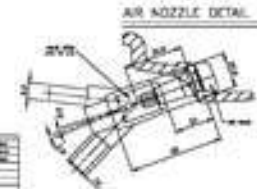
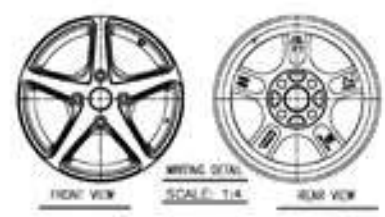
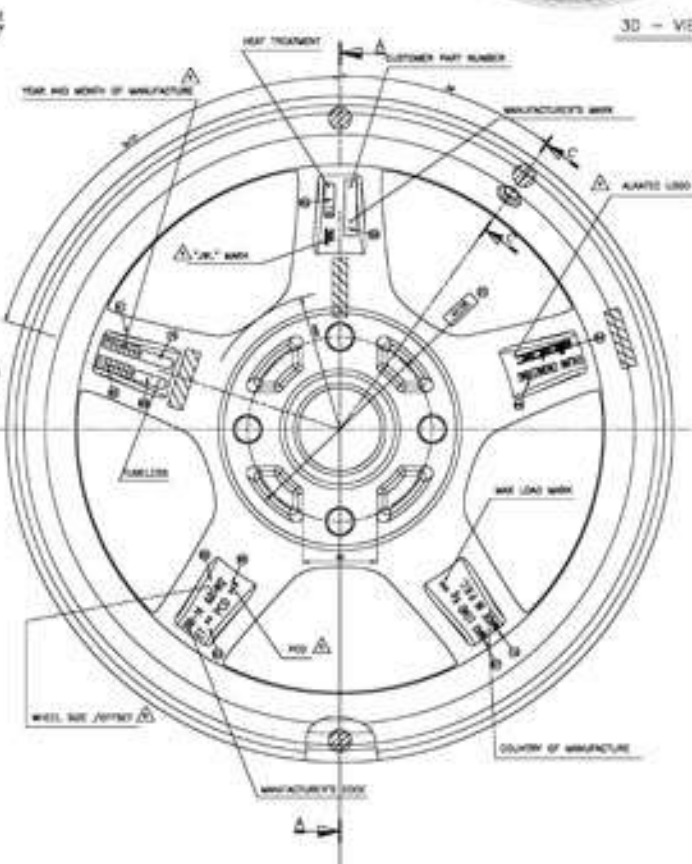
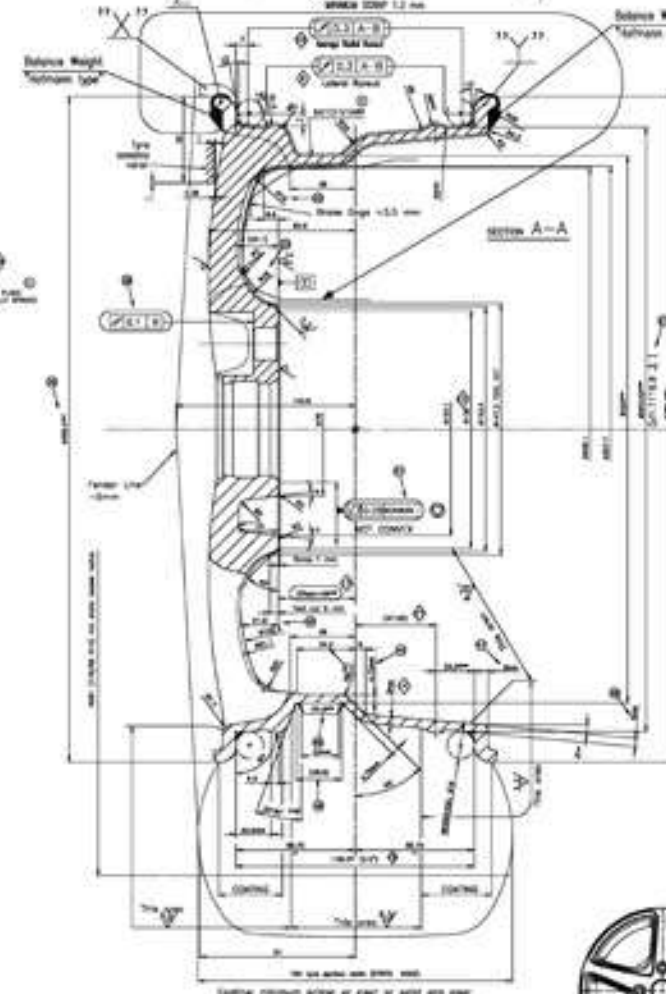
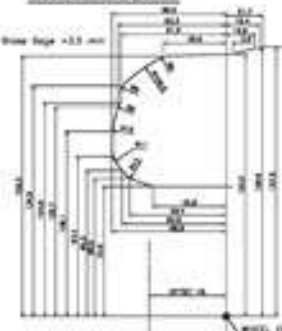
NUT SEAT DETAIL



ASSEMBLED



BRAKE CLEARANCE



REV.	DATE	DESCRIPTION
1		
2		
3		
4		
5		

NO.	DESCRIPTION	DATE	BY	CHECKED
1	DESIGN			
2	MANUFACTURING			
3	INSPECTION			
4	MARKETING			
5	SALES			

NO.	DESCRIPTION	DATE	BY	CHECKED
1	DESIGN			
2	MANUFACTURING			
3	INSPECTION			
4	MARKETING			
5	SALES			

NO.	DESCRIPTION	DATE	BY	CHECKED
1	DESIGN			
2	MANUFACTURING			
3	INSPECTION			
4	MARKETING			
5	SALES			

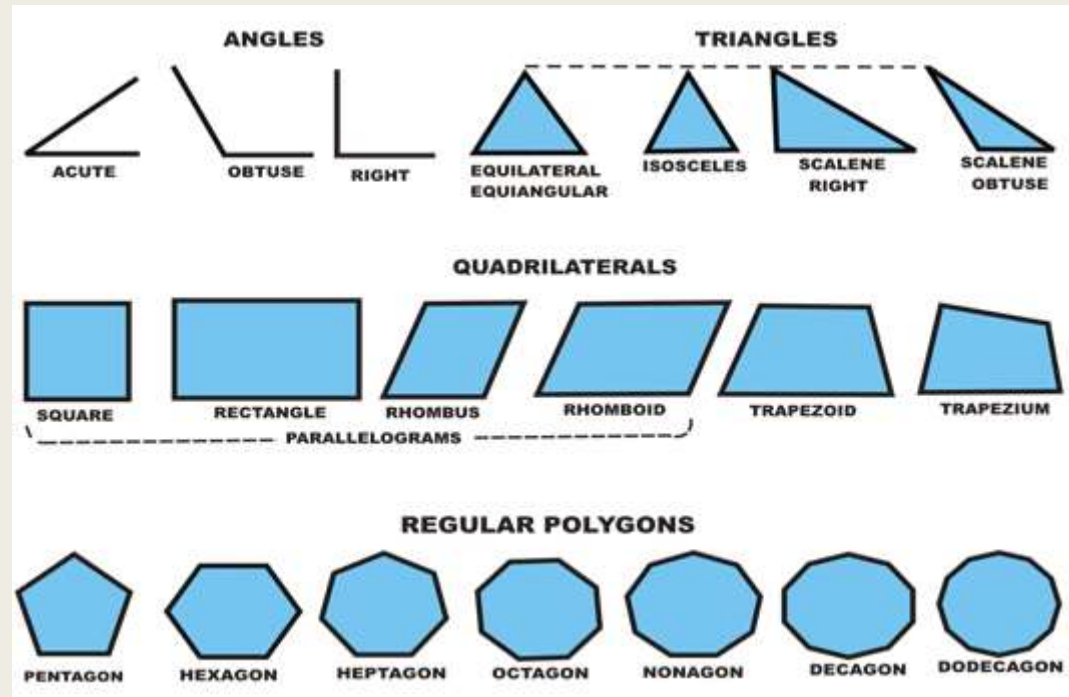
NO.	DESCRIPTION	DATE	BY	CHECKED
1	DESIGN			
2	MANUFACTURING			
3	INSPECTION			
4	MARKETING			
5	SALES			

NO.	DESCRIPTION	DATE	BY	CHECKED
1	DESIGN			
2	MANUFACTURING			
3	INSPECTION			
4	MARKETING			
5	SALES			

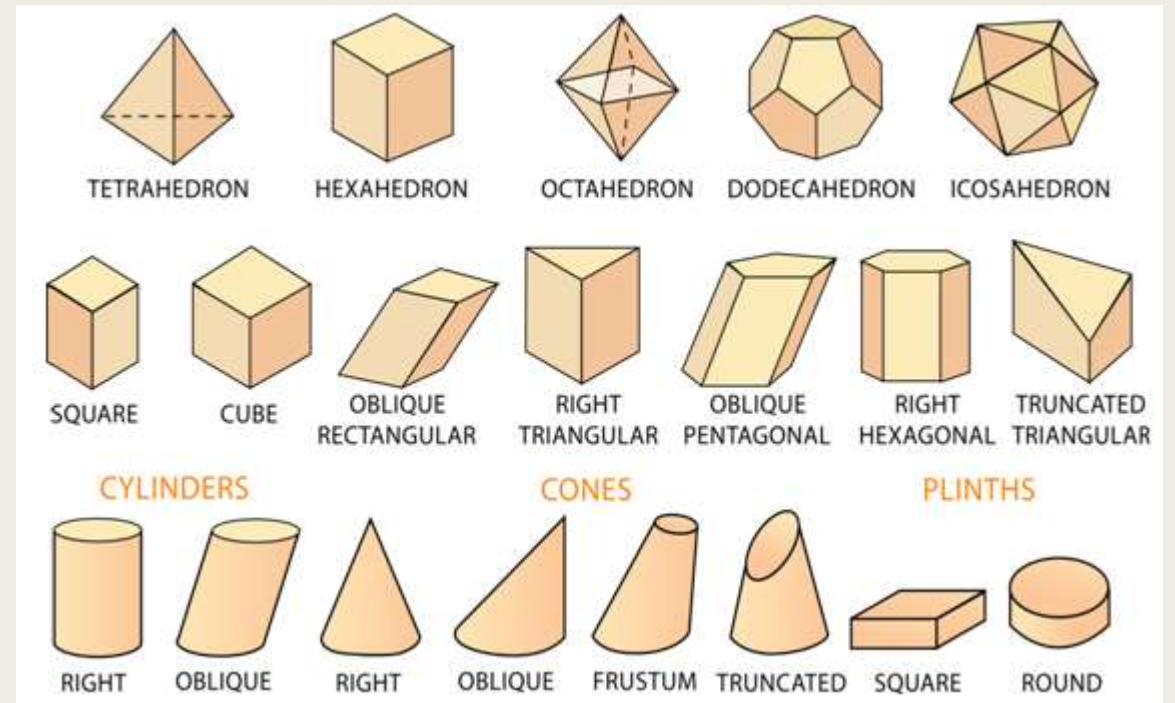
NO.	DESCRIPTION	DATE	BY	CHECKED
1	DESIGN			
2	MANUFACTURING			
3	INSPECTION			
4	MARKETING			
5	SALES			

alkatrac
 XTREME 480

Geometri Dasar



Bentuk 2 dimensi



Bentuk 3 dimensi

ANSI and ISO Orthographic Projections

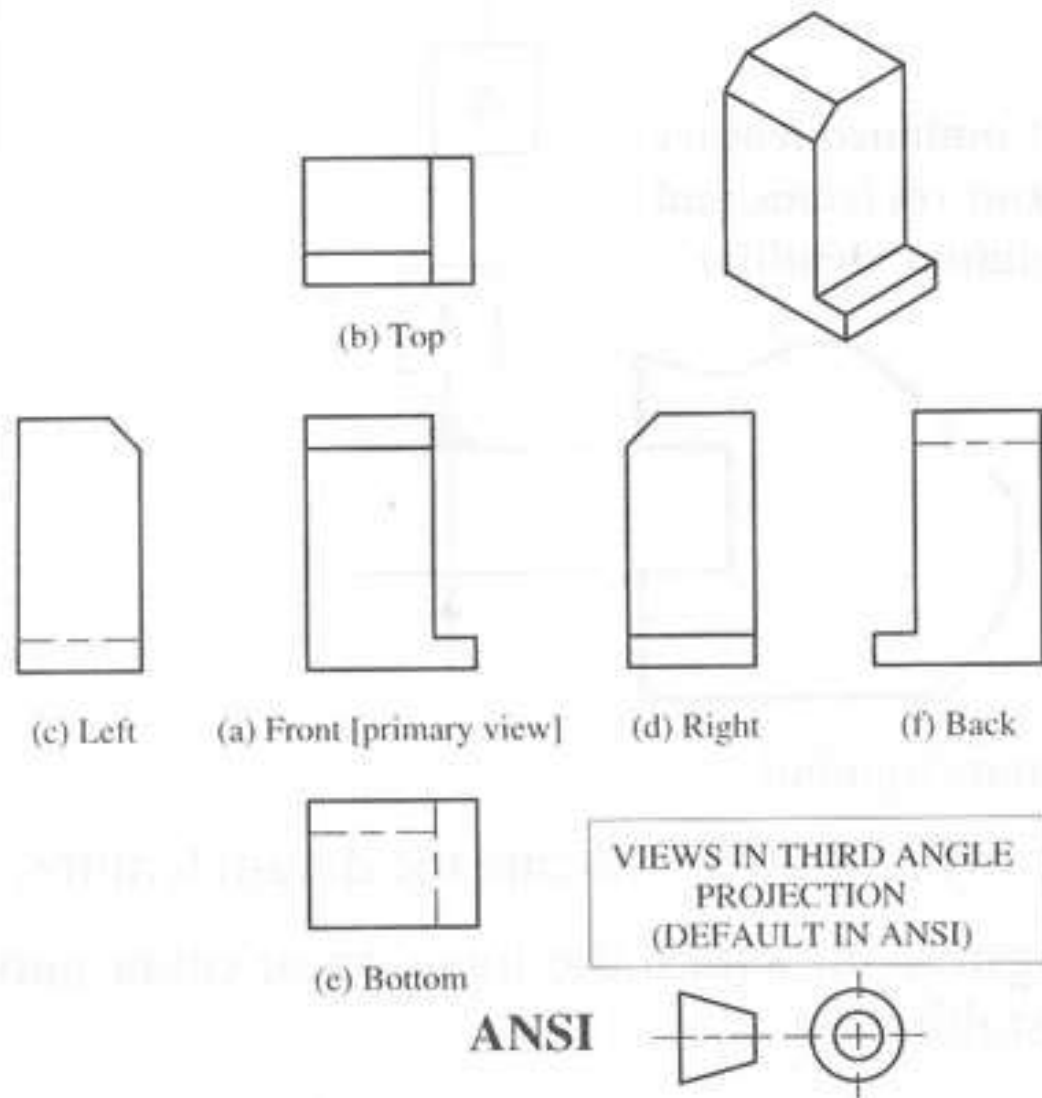


Fig. 1a. ANSI - Orthographic Projection Following Third Angle Projection.

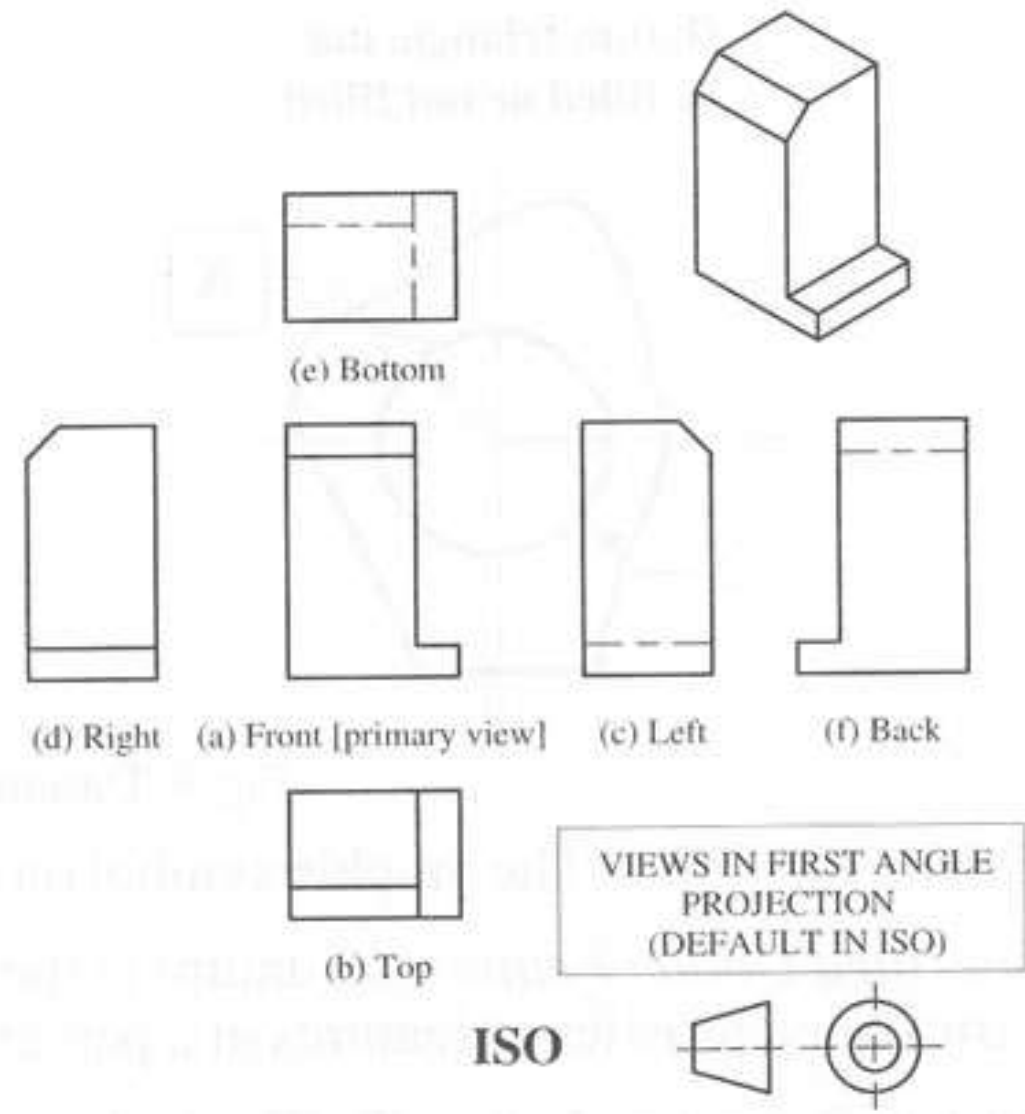


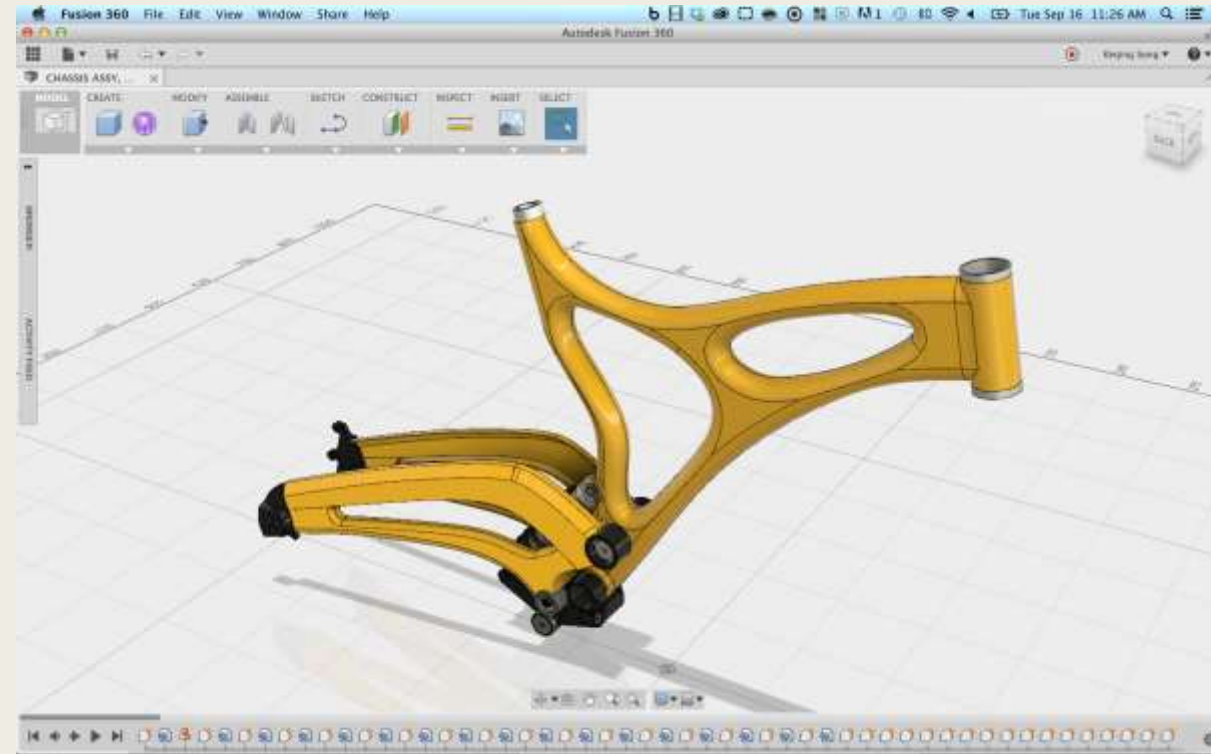
Fig. 1b. ISO - Orthographic Projection Following First Angle Projection.

Laboratorium Desain dan Perancangan Prodi Teknik Mesin UMY

Software Desain
CAD



Laboratorium Desain dan Perancangan Prodi Teknik Mesin UMY



 AUTODESK®
INVENTOR® 2015



Certified Professional

00382700

This number certifies that the recipient has successfully completed all program requirements.

 AUTODESK.

Autodesk and Inventor are registered trademarks or trademarks of Autodesk, Inc., in the USA and/or other countries. All other brand names, product names, or trademarks belong to their respective holders. © 2014 Autodesk, Inc. All rights reserved.

In recognition of a commitment to professional excellence, this certifies that
Nikola Serer

has successfully completed the program requirements of

**Autodesk Certified Professional:
Inventor® 2015**

December 5, 2014

Date



Carl Bass
President, Chief Executive Officer



CERTIFIED

AUTODESK®
INVENTOR®
2017

 AUTODESK.

Sertifikasi keahlian
software desain

Autodesk Inventor

Laboratorium Desain dan Perancangan Prodi Teknik Mesin UMY

3D Printer

